

CAPITAL RPU REGIONAL PLAN & WE PROSPER TOGETHER UPDATE

January 23, 2025



About Valley Vision



Renee John

Valley Vision, *Managing Director*



Valley Vision is a nonprofit civic leadership organization serving the Greater Sacramento region for 30 years. Throughout this time, Valley Vision has focused on improving the livability of the Capital Region through research and action.



Valley Vision is driven by a “triple bottom line” approach of co-equally advancing social equity, economic prosperity, and environmental sustainability.



Valley Vision has a proven track record of bringing diverse groups together to develop long-term solutions to the region’s greatest problems.

Regional Alignment

- Valley Vision serves as the Regional Organizer for the Capital Region Workforce Development Boards.
- In this role, Valley Vision:
 - Acts as the liaison between local workforce boards, the CWDB, and regional partners
 - Coordinates regional initiatives with labor, industry, education, economic development, and community leaders for regional alignment and communication



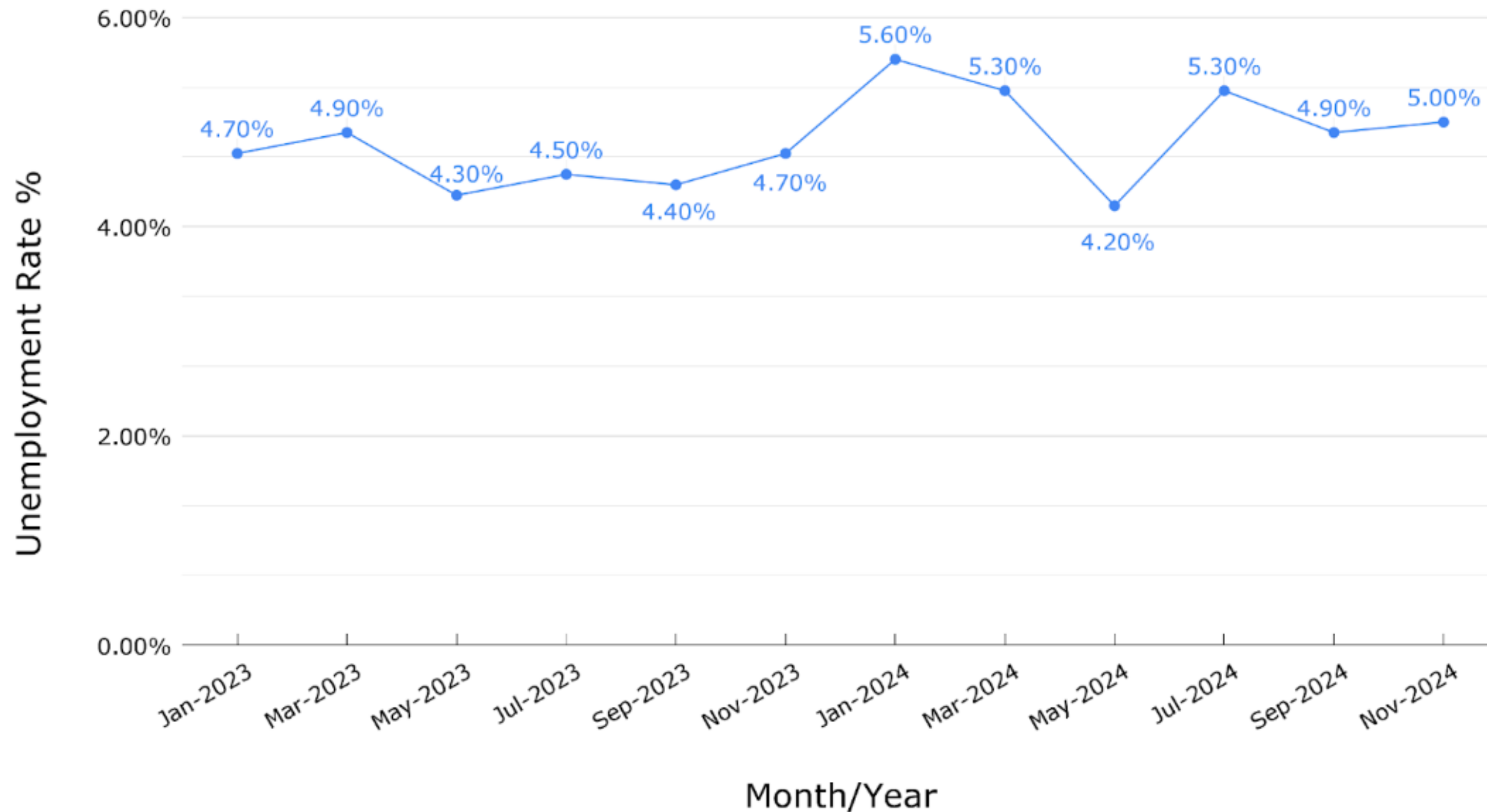
Capital Region Industry Advisories

The Capital Region co-invests in regional industry advisories featuring labor market data, trend information, and employer panel discussions to inform the full workforce partner ecosystem (supply side) of industry workforce needs (demand side).

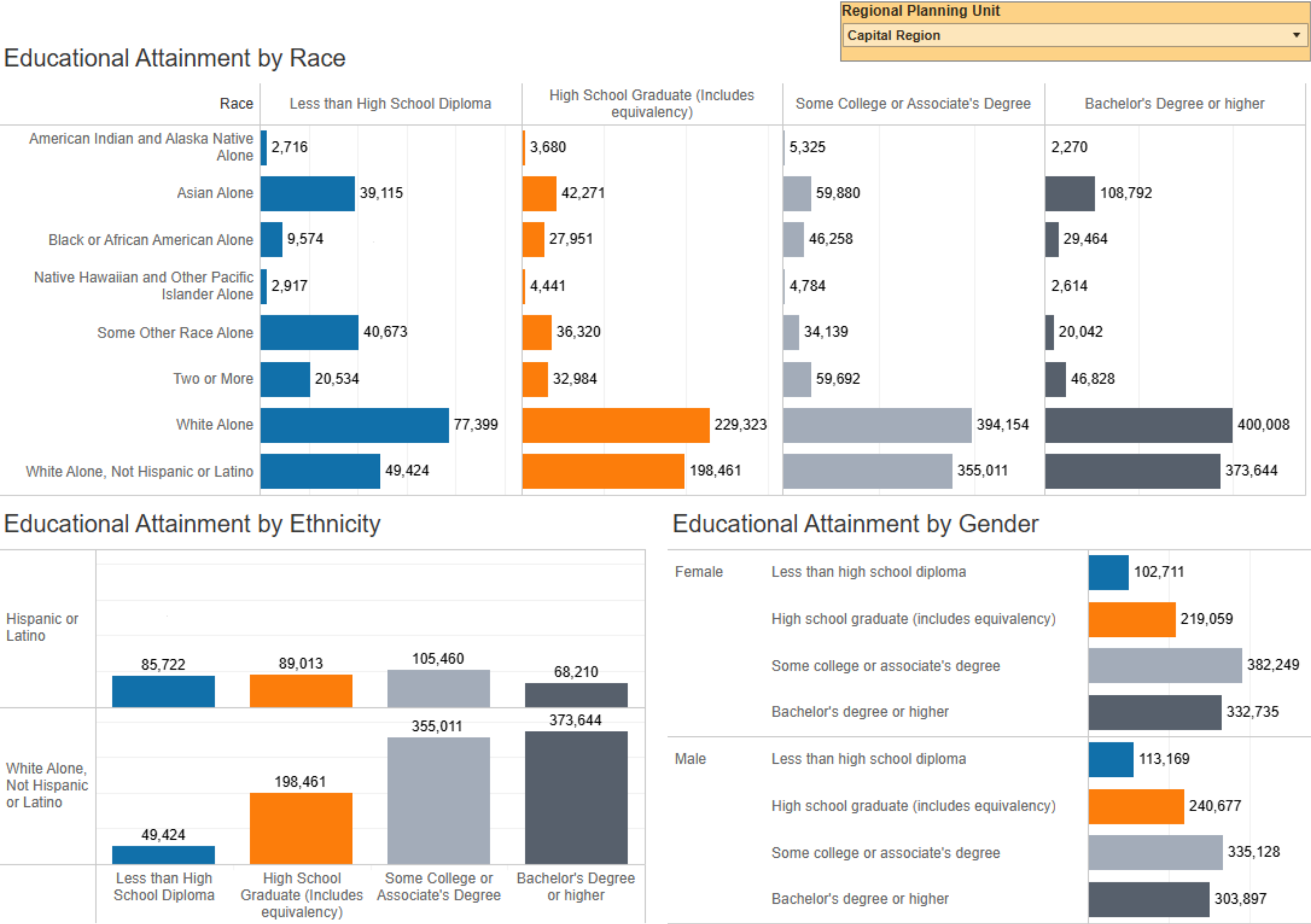


Unemployment Rate

Unemployment in the Capital Region (January 2023 - November 2024)



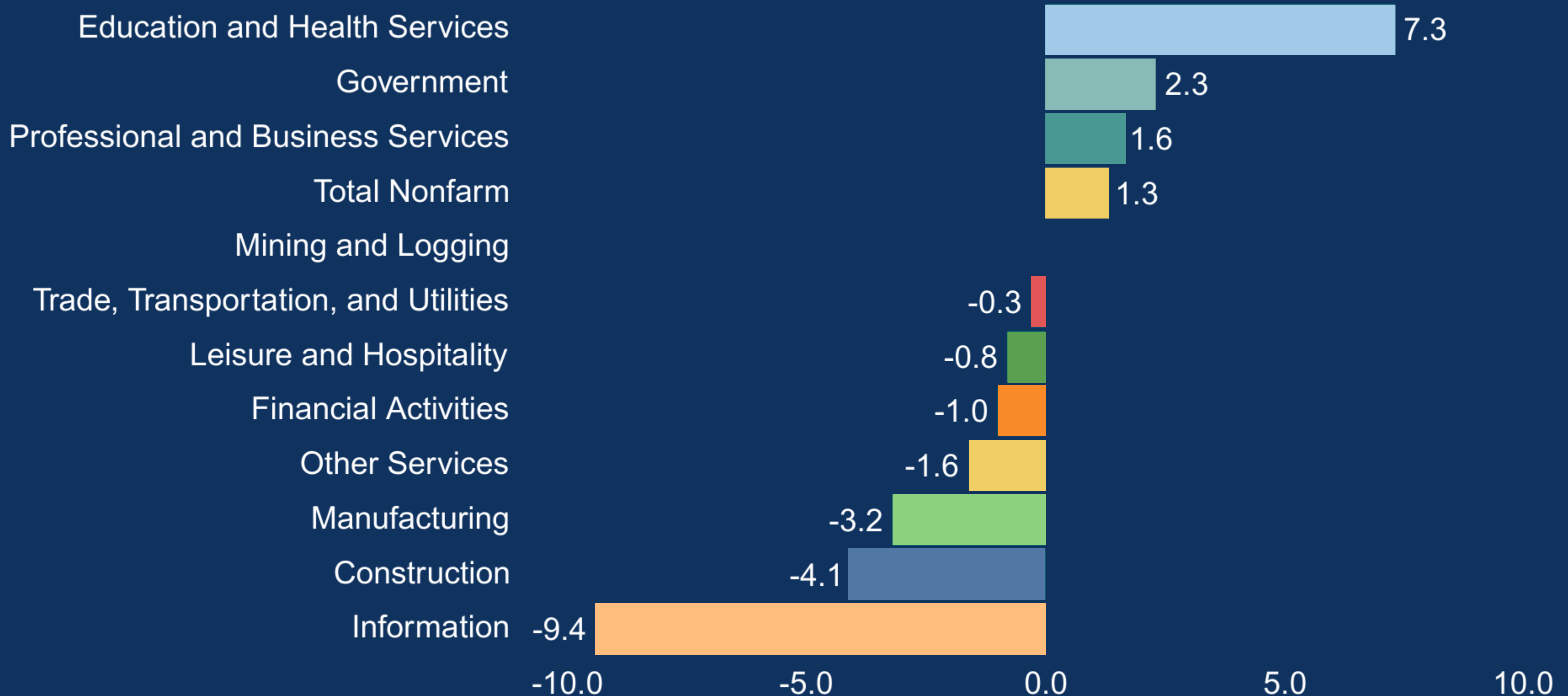
Education & Skill Levels



Source: U.S. Census Bureau, 2018-2022 American Community Survey 5-Year Estimates

In Demand Industry Sectors - Chart

Percent Change from 2023 to 2024

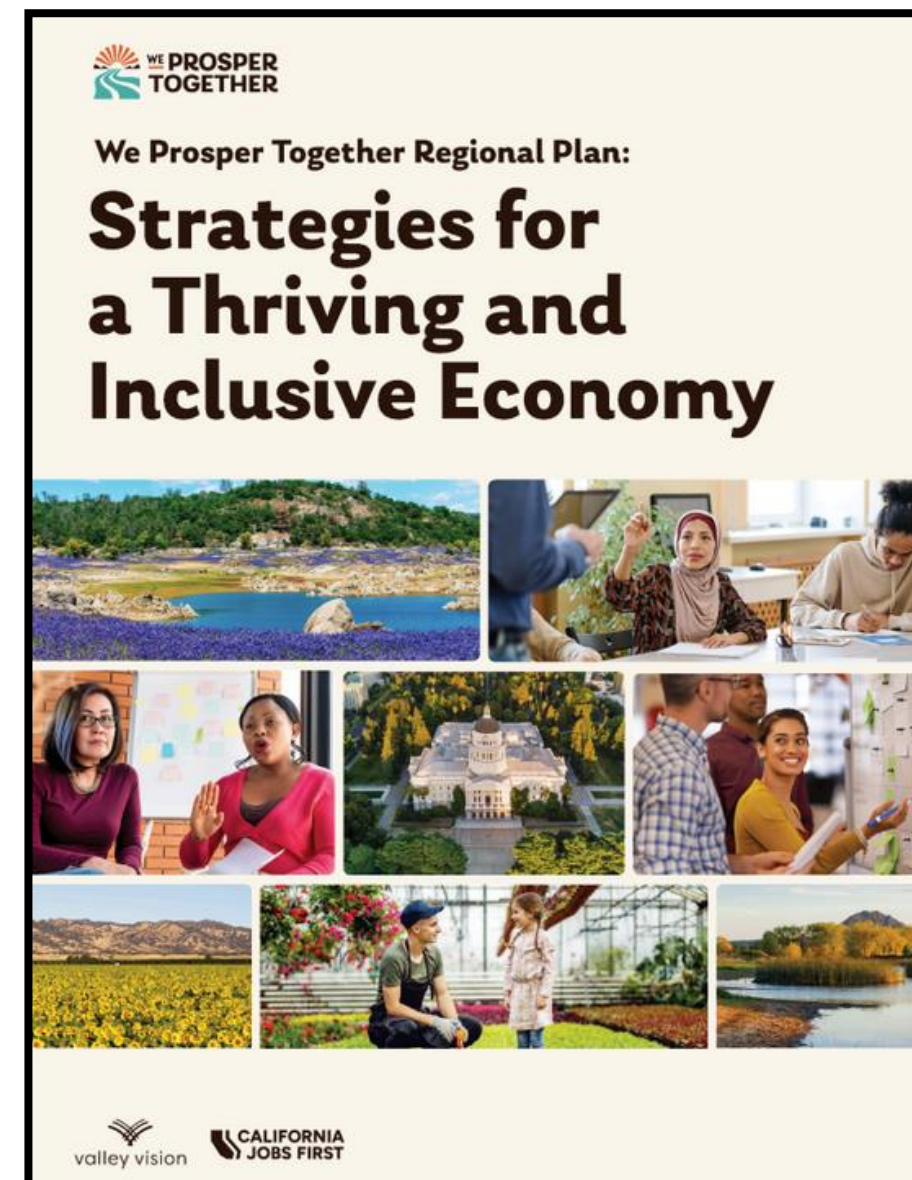


WE PROSPER TOGETHER

Regional Plan

We Prosper Together's Regional Plan: Strategies for a Thriving and Inclusive Economy provides a shared roadmap for creating a thriving and equitable economy in the Capital Region.

Get the full Regional Plan and Executive Summary at **weprospertogether.org/our-regional-plan**.

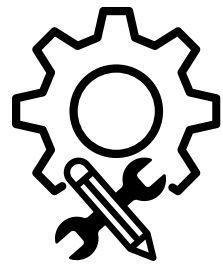


Scan to



Regional Plan Key Action Areas

01



Growing and creating high-quality jobs in priority tradable sectors.

02



Connecting disinvested communities to currently available quality jobs.

03



Driving equitable outcomes.



Tradable High Potential Industry Clusters



Precision Manufacturing

Involving advanced manufacturing techniques, this sector emphasizes high-quality production in industries such as aerospace, electronics, and medical devices.



Working Lands

Encompassing agriculture, forestry, and related activities, this sector leverages the region's natural resources to support sustainable economic development.



Biotechnology

This sector focuses on the development of innovative medical and agricultural products, contributing to advancements in health and sustainability.



Business Services

This sector includes a range of professional services that support business operations, such as finance, marketing, and consulting, driving efficiency and growth across industries.



Local Serving Industry Clusters



Healthcare

Our region has major medical systems such as Adventist Health, Dignity Health, Kaiser Permanente, Sutter Health, and UC Davis Health, providing many opportunity jobs.



Tourism

This sector employs a large number of workers, particularly in and around the Tahoe Basin, and attracts visitors throughout California and beyond. It also involves businesses of all sizes, from microbusinesses to major resorts.



Construction

Demand for skilled construction workers continues to rise, pushed higher by the need to replace retiring workers. Federally funded infrastructure projects and climate adaptation investments are also helping drive industry growth.



Creative Economy

Creative economy positions exist and play a crucial role throughout all industries. The region recognizes the need to encourage an economy that values creative skills.



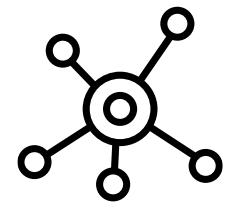
SOURCE: We Prosper Together Capital Region Economic Assessment, 2023

Talent Pipeline Management Collaboration (TPM)

- Roseville Healthcare TPM
 - Hosted Folsom Lake College Healthcare Summit
 - Convened Fall 2024 Surg. Tech & Rad. Tech advisory
- SCOE Mental Behavioral Health TPM
 - Building on previous Mental & Behavioral Health Advisory
 - Connecting to existing advisory body to advance measurable workforce outcomes
- BioTech TPM Employer Collaborative
 - Valley Vision, Capital Impact, SETA, and the City of Sacramento



Economic Mobility Strategies



Workforce Development

Support disinvested communities in building the skills and resources needed to qualify for and access high-quality jobs.



Outreach & Awareness

Increase outreach and awareness of training programs, high-quality jobs, and support systems.



Transportation

Enhance transportation to improve connectivity across the region and facilitate access to job opportunities.



Childcare

Remove barriers to affordable and accessible childcare.



Housing

Tackle the lack of affordable housing to reduce the burden of housing costs on families.



Regional Indicators

A: The region has a process to communicate industry workforce needs to supply-side partners.

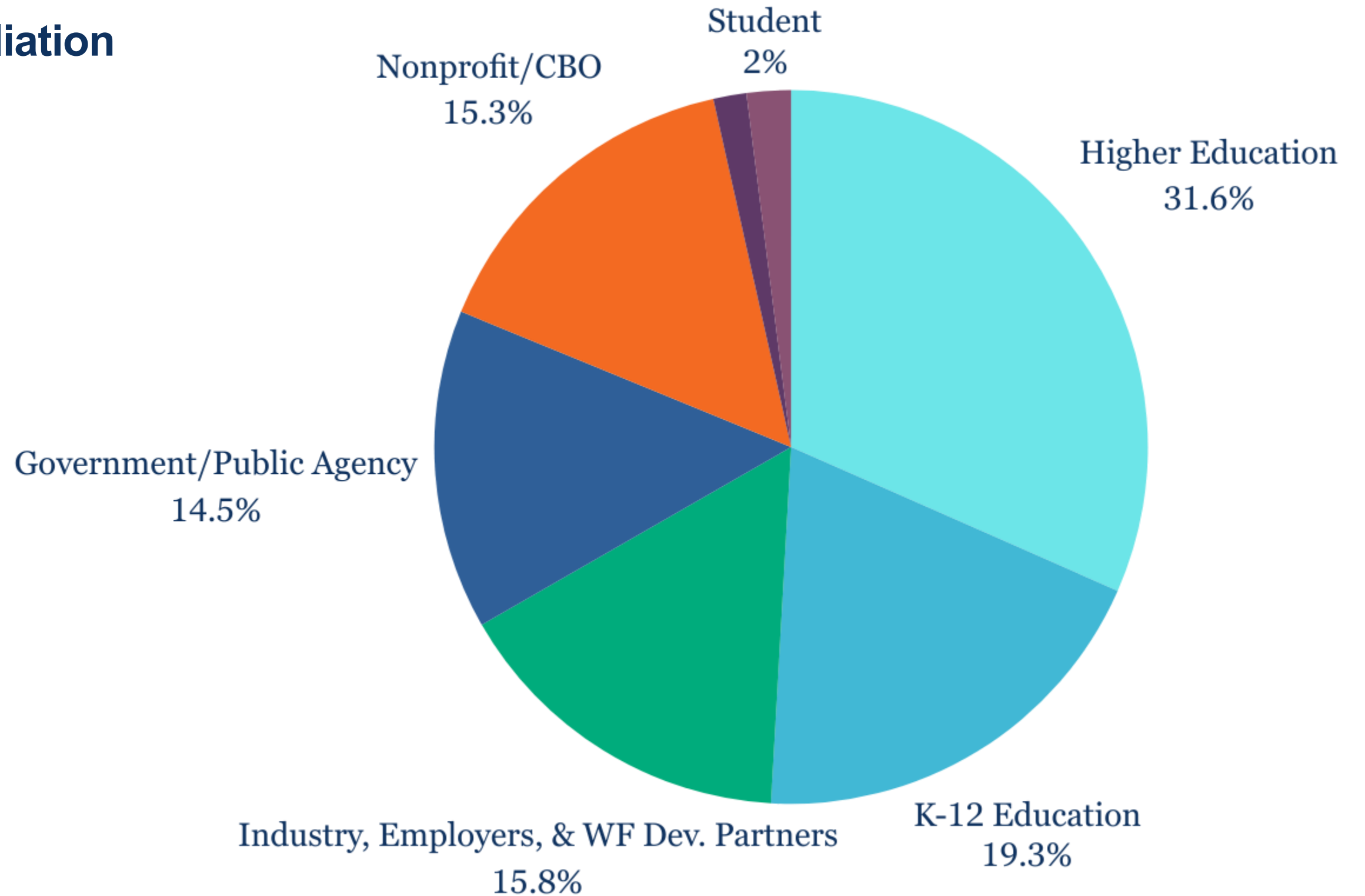
B: The region has policies supporting equity and strives to improve job quality.



Fall 2023 - Spring 2024 Program Year

Regional Advisory Participant Affiliation

- Valley Vision hosted seven regional advisories
- Hybrid & remote, with two cross-sector advisories
- Joined by 458 total participants

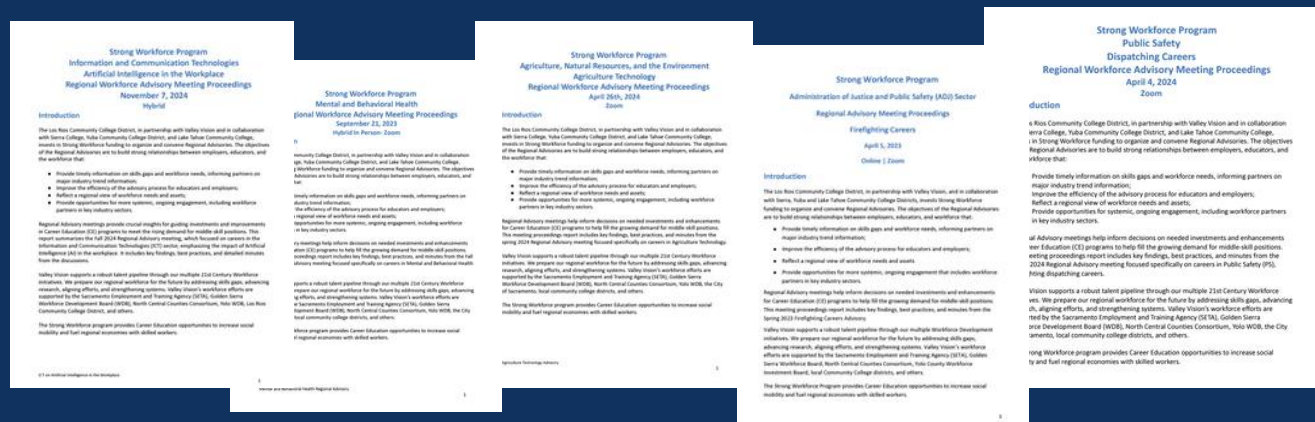


Developing a Ready Workforce Assets

Event Recordings



Meeting Proceedings Reports



Labor Market and Event Presentations



At a Glance One-Pagers





Regional Indicator B

Quality jobs: Jobs that pay a livable wage on an annual basis, provide employer-sponsored health insurance, and are likely to continue offering pathways to these benefits.

Promising jobs: Jobs that may not pay a livable wage or provide benefits currently but do offer career pathways to quality jobs within the next 10 years.

Opportunity jobs = Quality jobs + Promising jobs

Placer and El Dorado	\$34.30	\$69,972
----------------------	---------	----------

Regional Indicator B

The region continues to prioritize access for underinvested, high barrier communities to system services to increase their earnings potential.

The RPU established a target 90% of individuals served having one or more barriers to employment. The most recent full year measurement details the Capital Region with **87.8%** of the RPU's adult customers having one or more significant barriers to employment. Although there is still room for improvement to meet the target of 90%, this is a significant increase from 81.1% in 2022.

Additionally, average earnings increased per participant from \$38,542 in 2022 to **\$45,919** in 2024.



Public Input

Public input meetings were conducted hybrid with in-person and facilitated Zoom discussions. The meetings were held on the following dates and times:

Wednesday, December 4th, 2024, 5:00 PM - 7:30 PM
Sacramento Employment and Training Agency
925 Del Paso Boulevard
Sacramento, CA 95815

Wednesday, December 11th, 2024, 4:30 PM -6:30 PM
Yolo County Office of Education
1280 Santa Anita Court, #100
Woodland, CA 95776





Public Input

- Prioritize proactive, in person gatherings, physical flyers in high traffic, low income areas, tailored outreach to priority populations, and leverage digital and social media
- Build strong partnerships with employers to better understand their needs, inform training programs and facilitate placements
- Conduct trauma informed training on hiring practices and culturally competent communication to educate employers on workforce diversity needs and improve employment retention

Public Input

- Streamline and align services to reduce duplication of information sharing, reduce barriers, and improve experiences
- Develop user friendly, mobile accessible platforms
- Emphasize key areas of affordable housing, transportation, childcare and mental health services as vital components to lift individuals out of poverty.
- Strengthen partnerships with housing providers
- Expand earn and learn opportunities





Public Input

- Address unique barriers of formerly incarcerated individuals including employer hesitation and systemic funding limitations; expand partnerships to better serve
- Focus on Integrated Education and Training (IET), combining language literacy with job specific skills training
- Support digital literacy training to ensure all job seekers, including underrepresented populations, can navigate and engage in an increasingly digital world
- Engage community members in co-creating solutions

Stay Connected With We Prosper Together

We Prosper Together's Catalyst Pre-Development Project RFP is currently accepting applications through February 2nd.



www.weprosperitogether.org



info@weprosperitogether.org

g



[@weprosperitogether](https://www.instagram.com/weprosperitogether)

r



[@weprosperjuntos](https://twitter.com/weprosperjuntos)

s



We Prosper
Together





**Working to build a shared regional vision
with targeted industry strategies to ensure a
thriving future for all.**

Thank You

Renee John
Managing Director

renee.john@valleyvision.org